

# Matching Sections

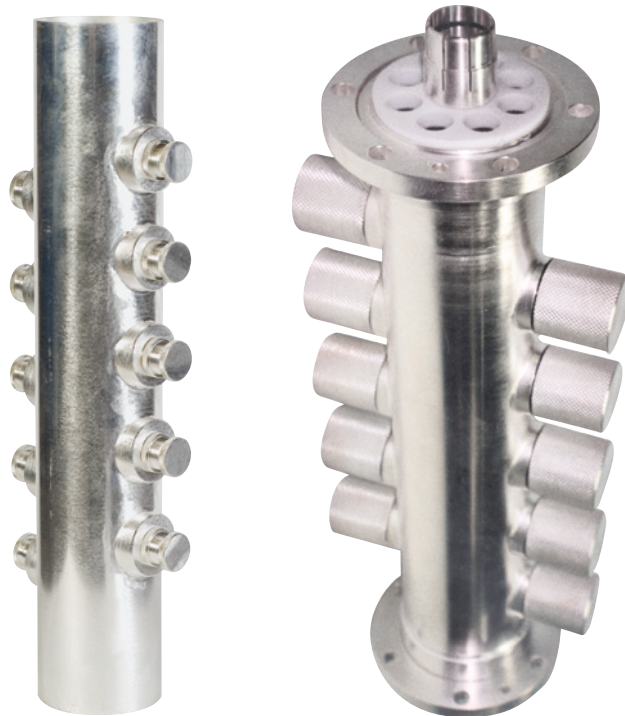


## PRODUCT FEATURES

- Manufactured in silver-plated brass and copper
- All line sizes up to 6 1/8"
- Gas tight versions available
- Flanged and unflanged options
- FM, VHF and UHF versions available

## PRODUCT PROFILE

These high-quality units are constructed from silver-plated brass and copper with a low-loss copper inner. Tuners can vary in number up to 10 depending on application and are available in both pressurised and non-pressurised versions. Available in all rigid line sizes up to 6 1/8" for VSUR matching in all radio and TV bands.



ARTICLE	MATC-7160-A0	MATC-R158-A0	MATC-158F-B0	MATC-2966-A0	MATC-R318-AA00	MATC-318F-A0
<b>FREQUENCY</b>	470 - 860 MHz	470 - 860 MHz	470 - 860 MHz	470 - 860 MHz	470 - 860 MHz	470 - 860 MHz
<b>IMPEDANCE</b>	50 Ohm	50 Ohm	50 Ohm	50 Ohm	50 Ohm	50 Ohm
<b>MATCHING CAPABILITY AT OPERATING CHANNEL VSWR</b>						
	1.05 to 6	1.05 to 6	1.05 to 6	1.05 to 6	1.05 to 6	1.05 to 6
<b>CONNECTION</b>	DIN 7/16	EIA 1 5/8" Unflanged	EIA 1 5/8" Flanged	DIN 29/66	EIA 3 1/8"	EIA 3 1/8" Flanged
<b>TYPE</b>	Outdoor	Indoor	Outdoor	Outdoor	Indoor	Outdoor
<b>DIMENSIONS</b>	Diam 20 mm (0.78 in) Length 310 mm (12.2 in)	Diam 52 mm (2.0 in) Length 436 mm (17.16 in)	Diam 89 mm (3.5 in) Length 370 mm (14.58 in)	Diam 96 mm (3.78 in) Length 450 mm (17.73 in)	Diam 77 mm (3.03 in) Length 370 mm (14.58 in)	Diam 77 mm (3.03 in) Length 370 mm (14.58 in)
<b>WEIGHT</b>	~3 kg (6.6 lb)	11 kg (24 lb)	12 kg (26.46 lb)	16 kg (35.28 lb)	~13 kg (35.28 lb)	16 kg (35.28 lb)

ARTICLE	MATC-4398-A0	MATC-RL98-AA00	MATC-R412-AA00	MAT4-618F-AA00	MATC-R618-A0
<b>FREQUENCY</b>	470 - 860 MHz	470 - 860 MHz	470 - 860 MHz	470 - 860 MHz	470 - 860 MHz
<b>IMPEDANCE</b>	50 Ohm	50 Ohm	50 Ohm	50 Ohm	50 Ohm
<b>MATCHING CAPABILITY AT OPERATING CHANNEL VSWR</b>					
	1.05 to 6	1.05 to 6	1.05 to 6	1.05 to 6	1.05 to 6
<b>CONNECTION</b>	DIN 43/98	RL98	EIA 4 1/2" Unflanged	EIA 6 1/8" Flanged	EIA 6 1/8" Unflanged
<b>TYPE</b>	Outdoor	Indoor	Indoor	Outdoor	Indoor
<b>DIMENSIONS</b>	Diam 120 mm (4.7 in) Length 436 mm (17.65 in)	Diam 100 mm (3.94 in) Length 423 mm (16.66 in)	Diam 106 mm (4.17 in) Length 423 mm (16.65 in)	Diam 164 mm (6.46 in) Length 501 mm (19.72 in)	Diam 164 mm (6.46 in) Length 422 mm (16.62 in)
<b>WEIGHT</b>	~18 kg (40 lb)	~14 kg (22.05 lb)	~14 kg (22.05 lb)	~18 kg (40 lb)	~11 kg (24 lb)